



LR 18813  
6 Ga (CAL.410) 2½" (65mm)  
LEVER ACTION SHOTGUN  
INSTRUCTION MANUAL

Read the instructions and warnings in this manual carefully before using this firearms

## INTRODUCTION

This rifle is a fire weapon and fire weapons are dangerous and death! Read the instructions and warnings in the owner's manual before using this rifle. Learn how to use the rifle safely! Not following the instructions and warnings in this manual can cause damage, injury and death!

Always treat the rifle (even if it is empty) loaded and be careful. Always angle the barrel of the rifle in a safe direction. Never aim the barrel of a rifle at anything you are not intended / planned to hit. Safety mechanisms of fire weapons may not always work correctly. Rely on the safety mechanism. Avoid making dangerous movements. Do not refill your rifle until you are ready to fire. When you have a full rifle; walking, run, climbing and jumping are dangerous. Never carry a loaded rifle in the vehicle. Always unload the rifle before loading any vehicle.

**Do not fire without exact jurisdiction to your target and things behind your target. If there is any doubt, do not fire !**

Never fire on hard, flat surfaces and water surface. Only the caliber of your rifle and the cartridge. Use filters suitable for your bed. This information is written / specified on the barrel of your rifle. Always use clean, dry, original factory filled cartridges.

1

## SAFETY RULES

Before refilling and firing your rifle, ensure that the barrel is clean and that there is not anything in the barrel that could cause clogging or forcing..

Protect your eyes and ears by using glasses and headphones when hooting. Make sure that things around you are similarly protected. Never leave a loaded rifle unattended.

Store / storage your rifle unloaded in clean and dry places, out of the reach of children. Storage / storage your rifles and cartridges in different places.

**Do not interference with the rifle except as described and explained in this manual. Do not try to make changes to any part !**

**Only qualified qualified weaponmasters must replace/refund/repair this rifle and its parts.!**

2



1-SOLE TIRE  
2-STOCK  
3-LEVER  
4-TRIGGER LOCK  
5-TRIGGER  
6-COCK  
7-NEEDLE SAFETY  
8-MECHANISM

9- MAGAZINE FED COVER  
10- REAR-SIGHT  
11- FOREND  
12- MAGAZINE TUBE  
13- BARREL  
14- FRONT-SIGHT  
15- MUZZLE  
16- MAGAZINE COVER

3

## CARTRIDGE / AMMUNITION

- USE ONLY 36 CALIBER (CAL410) 2½" (65MM) CARTRIDGES WITH THIS RUN !
- THE CARTRIDGE OF THIS RUN IS ONLY FOR 2½" (65MM) CARTRIDGES !
- NEVER ATTEMPT TO FILL 3" (76MM) CARTRIDGES !
- ONLY USE CARTRIDGES SUITABLE TO BE FIRED ON FACTORY REFILLING AND GUN CHARGERS.
- NEVER USE NON-STANDARD, POST-FILLED OR HAND-FILLED CARTRIDGES.
- CHECK CARTRIDGES WITH YOUR EYES AND HANDS BEFORE PLACING THE CARTRIDGES. NEVER PLUG CARTRIDGES IN THE CHARGER WITH THE POIN/COLLECTION OF THE LEAD EXCEEDING THE PLASTIC SHIELD !
- INCORRECT, NON-STANDARD, INAPPROPRIATE, FULLY OR HANDLING CARTRIDGES CAN CAUSE DAMAGE, INJURY AND EVEN DEATH !

4

## INSTRUCTIONS FOR USE



**'SAFETY' AND 'FIRE' LOCATIONS**  
THIS RIFLE HAS A 'NEEDLE SAFETY'; WHEN THE NEEDLE SAFETY IS IN THE ON POSITION, THE INSTALLED COCKER WILL HIT THE NEEDLE WHEN THE TRIGGER IS PLUGGED, BUT THE NEEDLE IT WILL NOT HIT THE CAPSULE OF THE CARTRIDGE, SO THE CARTRIDGE WILL NOT BE FIRED.



WHEN THE NEEDLE SAFETY IS IN OFF POSITION, WHEN THE TRIGGER IS PULL, THE INSTALLED COCKER WILL HIT THE NEEDLE AND THE NEEDLE TO THE CASE OF THE CARTRIDGE. THUS, THE CARTRIDGE WILL BE FIRED !

5



WHEN THE ROCK IS STILL IN THE MOVEMENT POSITION, THE COCK DOES NOT MOVE WHEN THE TRIGGER IS PULL, SO IT DOESN'T HIT THE NEEDLE, THUS THE CARTRIDGE IS NOT FIRED.



WHEN THE COCKER IS IN INSTALLED POSITION, WHEN THE TRIGGER IS PULL, THE CARTRIDGE WILL HIT THE NEEDLE, AND IF THE NEEDLE IS NOT ON THE CAPSULE OF THE CARTRIDGE, THE CARTRIDGE WILL BE FIRED!

6

## LOWERING THE ROCK TO 'STILL POSITION';

You can always grow the rock. Trick the cocker with your hand or push the lever You can build by drawing.

Immediately lower the rock to the 'stable position' if you are not shooting in a very short time. To do this;

- 1- Grip the rifle tightly. 2- Grip the rifle firmly.
- 3- Put your trigger hand to the rock and press firmly to keep the cocker back.
- 4- Release the cocker from the installed position by holding the cocker tightly with your tigth, by slowly pulling the trigger.
- 5- Remove your finger from the trigger immediately.
- 6- Slowly and carefully turn the rock to still.

BE VERY CAREFUL! IF YOU MISS THE COCKER WITH YOUR THUMB WHILE DOING THIS, YOU MAY CAUSE THE CARTRIDGE TO FIRE !

THIS RIFLE HAS A 'TRIGGER LOCK MECHANISM' IF YOU CANNOT PRESS THE TRIGGER LOCK WITH THE LEVER, YOU CANNOT PULL THE TRIGGER. PLACE YOUR HANDS ON THE HANDLE AND THE KEY WITH THIS CONSIDERING



7

## FILLING INSTRUCTIONS

FILLING THE CARTRIDGE CASE  
ONLY USE CARTRIDGES THAT ARE SUITABLE FOR YUR RIFLE CALIBER AND CARTRIDGE. THIS INFORMATION IS WRITTEN/STATED ON THE BARREL OF YOUR RIFLE. CARTRIDGE CASE CAN BE FILLED IN TWO DIFFERENT WAYS; MUST NOT BE MADE WHILE THERE IS A CARTRIDGE IN THE MAGAZINE! PUSH THE LEVER DOWN AND OPEN THE MECHANISM. PLACE THE FRONT END OF THE CARTRIDGE TOWARDS INSIDE THE CARTRIDGE. PULL THE LEVER UP AND TURN OFF THE MECHANISM

1- PUSH THE LEVER DOWN UP UP <: BY SEWING. THUS, BY TRANSFERRING THE FITCH IN THE CHARGER (PRE-FILLED TO THE CHARGER) TO THE CARTRIDGE BED.

CHARGER REFILL;  
THE CHARGER IS FILLED THROUGH THE FEED CAP ON THE RIGHT SIDE OF THE BODY.

ONLY USE CARTRIDGES THAT ARE SUITABLE FOR THE CALIBER OF YOUR SHOT AND THE CARTRIDGE BED. THIS INFORMATION IS WRITTEN/STATED ON THE BARREL OF YOUR ROLLER.



8

## DRAINING INSTRUCTIONS

- 1- STRETCH THE BARREL OF THE TOFEG WITH A SAFE VONE. BRING IGNE SAFETY ON (SAFETY) SUBJECT.
- 2- KEEPING YOUR FINGER AWAY FROM THE TRIGGER, PUSH THE LEVEL FULL VOL, AND THROW OUT THE FISHER IN THE BOTTOM CARTRIDGE VAGAG. THEN SHUT THE LEVVE FULL VOL VOLKS OFF THE MECHANISM.
- 3- REPEAT THIS PROCESS, FIRST TRANSFER THE FRAMES FROM THE CHARGER TUBE TO THE CARTRIDGE VASKET, THEN THROW OUT FROM THE CARTRIDGE VASKET. REPEAT THIS PROCEDURE UNTIL THE TOFEK IS FIRED. ALWAYS LOOK AT THE OPENING OF THE BODY, MAKE SURE THAT THERE ARE NO CARTRIDGES IN THE CARTRIDGE OF THE CARTRIDGE AND THE CHARGER.

## FIRE INSTRUCTIONS

STRETCH THE BARREL OF THE TOOL WITH A SAFE VONE UNTIL THE MOMENT OF FIRING. FILL THE CARTRIDGE VACUUM (AND CHARGER0 IF YOU WANT). TURN THE NEEDLE SAFETY TO THE OFF (ATES) POSITION. (IF THE COCKER IS NOT ALREADY INSTALLED) SET THE COCKER BY HOLDING THE COCKER WITH THE PRESS FINGER OF YOUR TRIGGER HAND AND PULLING BACK .YOUR TOFE IS READY TO FIRE NOW! TOFEG TIGHTLY ON YOUR SHOULDER, TAKE APRIL, TARGET EVKEN TRIGGER FIRE THE TOFEG! THIS RIFLE HAS A 'TRIGGER LOCK' MECHANISM IF YOU CAN'T PRINT, YOU CAN'T PULL THE TRIGGER. GIVE YOUR HANDS TO THE GRIP AND LEVVEVE WITH THIS IN CONSIDERATION. THE TRIGGER LOCK IS NOT A SAFETY MECHANISM. RELY ON THE TRIGGER LOCK TO AVOID DANGEROUS MOVEMENTS!

9

YOU HAVE ADJUSTABLE TRAVEL ON YOUR TUFFE. BROWSE BETWEEN MODELS DIFFERENCE IN TYPE AND SETTING SYSTEM. CAN SHOW.



**FIRE BEFORE SETTING REAR SIGHT. MAKE SURE YOUR BED AND CHARGER ARE EMPTY! MAKE SURE YOUR BED AND CHARGER ARE EMPTY!**

## CHARGER / CHARGER WEDGE

YOUR TUFFE IS DELIVERED TO YOU WITH A CHARGER WEDGE. THE WEDGE IS INSTALLED IN THE CUP AND YOU CAN REMOVE THE CHARGER CAPACITY WITH 2 (TWO) LIMITS WITH THE CHARGER WEDGE AT ANY TIME FITTING THE CHARGER WEDGE BEFORE REMOVING MAKE SURE THE CARTRIDGE BED AND THE CHARGER ARE EMPTY! WATCH THE CHARGER WEDGE PROTECT YOUR EYES BY USING GLASSES WHILE REMOVING! REMEMBER, THE CHARGER COVER AND THE CHARGER WEDGE ARE UNDER SPRING PRESSURE!

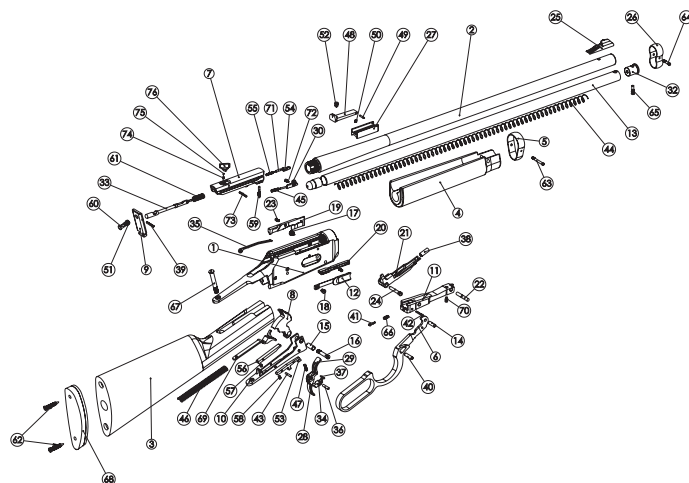
10

## CLEANING AND MAINTENANCE INSTRUCTIONS

**CLEANING BEFORE SHOOTING:** MAKE SURE THAT THE BARREL, BODY, CARTRIDGE FEEDING MECHANISM, LEVER MECHANISM, MECHANISM AND CARTRIDGE BEARING AREAS ARE CLEAN AND LIGHTLY OIL BEFORE FIRING YOUR GUARD. CLEAN AND LIGHTLY LUBRICATE THE AREAS SPECIFIED IN THE "CLEANING AND CARE INSTRUCTIONS" BELOW. CLEANING MAINTENANCE ON YOUR TUFF BEFORE LUBRICATION MAKE SURE THE CARTRIDGE BED AND THE CHARGER ARE EMPTY!

- 1- MAKE SURE THAT THE CARTRIDGE BED AND THE CHARGER ARE EMPTY!
- 2- CLEAN THE BARREL AND THE CARTRIDGE BED. CLEAN THE BARREL AND THE CARTRIDGE BED USING A CLEANING CLOTH. FOR THE BARREL, USE A SIZE CLEANING CLOTH THAT WILL BE TIGHTFUL. OPEN THE MECHANISM BY PUSHING THE LEVER. INSERVE THE BARREL AND CLEANING CLOTH INTO THE BARREL BY THE CARTRIDGE BED (BODY) AND PUSH THE CLOTH OUT TO THE BARREL muzzle. REPEAT THIS PROCEDURE UNTIL THE BARREL AND THE CARTRIDGE BED ARE CLEAN. IF NEEDED, USE SOLVENT TO CLEAN THE CLOTH DOKON OR Brass: BRUSH.
- 3- AFTER THE BARREL HAS BEEN CLEANED AND REMOVED FROM LEAD AND GUNDOW RESIDUES, LIGHTLY LUBRICATE THESE AREAS WITH A LIGHTLY OILY CLOTH, WITH THE HELP OF THE BARREL. USE QUALITY SAND CARE OIL.
- 4- OPEN THE MECHANISM BY PUSHING THE LEVER DOWN. TOM METAL SURFACES THAT YOU CAN USE; WIPE AND CLEAN THE INSIDE OF THE BODY AND THE MECHANISM (AND THEIR RAIL SURFACES), PARTS OF THE LEVER MECHANISM, PARTS OF THE CARTRIDGE FEEDING MECHANISM WITH CLOTH.
- 5- AFTER THE SPECIFIED METAL SURFACES ARE CLEANED AND REMOVED FROM DIRT AND RESIDUES, LIGHTLY LUBRICATE THE BELOW SIGNED POINTS / AREAS

11



- 1 BARREL
- 2 SIZE STOCK
- 3 FORE HAND
- 4 FOREWARD FIXING
- 5 RAILING
- 6 Mechanism
- 7 COCKEREL
- 8 BACK COVER
- 9 LOWER TAIL
- 10 BOTTOM COVER
- 11 DUST COVER
- 12 MAGAZINE TUBE
- 13 MECHANISM GUARD FIXING PIN
- 14 ROCK FIXING SLEEVE
- 15 ROCK FIXING SCREW
- 16 MECHANISM PIN
- 17 DUST COVER FIXING SCREW
- 18 LEFT CARTRIDGE HOLDER
- 19 RIGHT CARTRIDGE HOLDER
- 20 GROIN
- 21 BOTTOM COVER FIXING PIN
- 22 CARTRIDGE HOLDER FIXING SCREW
- 23 SPOON FIXING SCREW
- 24 STYE
- 25 MAGAZINE TUBE FIXING

- 26 SIX TOURS
- 27 Trigger
- 28 TRIGGER TOOL
- 29 CARTRIDGE SHOOTER
- 30 MAGAZINE TUBE PLUG
- 31 MAGAZINE PIPE TOP COVER
- 32 MECHANISM PIN
- 33 Trigger
- 34 SPOON SPRING
- 35 TRIGGER FIXING E-PIN
- 36 TRIGGER INTERMEDIATE FIXING PIN
- 37 SPOON CARTRIDGE HOLDER MAGNET PIN
- 38 BACK COVER NEEDLE FIXING PIN
- 39 BOTTOM COVER GUARDIAN FIXING PIN
- 40 BOTTOM COVER LOCK
- 41 BOTTOM COVER LOCK FIXING PIN
- 42 LOWER SAFETY FIXING PIN
- 43 CHARGER SPRING
- 44 CARTRIDGE SPRING
- 45 ROCK SPRING
- 46 TRIGGER SPRING
- 47 GEZ USTU
- 48 TRACK FIXING PIN
- 49 GEZ LOWER SPRING
- 50 KILIT NEEDLE SPRING

- 51 GEZ USTU FIXING SCREW
- 52 LOWER SAFETY
- 53 NAILS
- 54 NAILS
- 55 INTERIOR TRIGGER BACK PRESSURE
- 56 INTERIOR TRIGGER PRESSURE SPRING
- 57 LOWER SAFETY SPRING
- 58 NAIL FIXING SCREW
- 59 BACK COVER NEEDLE
- 60 NEEDLE SPRING
- 61 PLASTIC STOCK SCREW
- 62 FORE-HANDLE RING FIXING SCREW
- 63 BARREL RING FIXING SCREW
- 64 CHARGER PIPE FRONT PLUG FIXING SCREW
- 65 BOTTOM COVER LOCK SPRING
- 66 STOCK FIXING SCREW
- 67 PLASTIC STOCK
- 68 ROCK PUSHER
- 69 BOTTOM COVER FIXING PIN SCREW
- 70 NAIL SPRING Pin
- 71 CARTRIDGE FIXING SCREW
- 72 MECHANISM SAFETY FIXING PIN
- 73 MECHANISM SAFETY BALL SPRING
- 74 MECHANISM SAFETY BALL
- 75 MECHANISM SAFETY

14

## WARRANTY DEED

This product is covered by a 2-year guarantee by Salix Arms against faulty workmanship and manufacturing defects and Salix Arms agrees to supply free replacement parts (wood not included) for defected parts from date of purchase.

15

## DISCLAIMER OF THE WARRANTY

- \*Occurrence of damages due to firing with hand-filled or refilled cartridges
- \*Occurrence of damages due to firing in case of blockage in the barrel
- \*Occurrence of damages due to the lack of regular and necessary maintenance
- \*Repairs and replacements made by unauthorized persons on guns are make warranty invalid.

Please note that certificates that are not sealed by the vendor or that are incomplete are invalid. By purchasing the product, the user acknowledges and agrees the foregoing.

16

**salix**  
A R M S

17